

Message From the Head

Both schools enjoyed the Christmas period, having a wide range of events and opportunities to take part in. The pupils at Shenstone performed a well received version of the Nativity story which was extremely well attended by parents and carers. Brades Lodge students helped organise and run a Saturday morning Christmas fair, raising nearly £200 washing cars, manning stalls and feeding guests.

This year we will be focussing on OFSTED areas for development and will be moving toward a more unified approach to managing behaviour which will cross both sites. It is felt that this will particularly support the children moving from the lower to the upper school.

We will be underpinning this work by introducing to the students an ethos framed around three Respects. Respect Yourself, Respect Other People and Respect The School. We are also focussing heavily on developing the link between education and employment for children in all age ranges.

The reward systems across the schools are also under review to ensure they remain relevant to the pupils and encourage them to make positive behaviour choices.

Tunnel Vision

Students from The Brades Lodge have been building a Poly Tunnel as part of the horticultural vocational programme. The boys have used a number of skills to plan, prepare and construct the Tunnel and are now looking forward to its use. In the coming weeks they will be planting and tending a wide range of vegetables with a view to using them within the school kitchens. Brandon said "It's good fun but can be a bit cold some days!"



FREE SWIMMING PASS

If you live in Sandwell and are aged 16 and under or 60 plus you can register online to access FREE swimming at your local pool.

Those aged 16 and under can swim for FREE during school holidays.

Those aged 60 plus can swim for FREE everyday until 1pm.

FREE swimming is subject to availability during busy periods and does not include; swimming lessons, instructed or targeted sessions.

You can register on the webpage below.

<http://www.slt-leisure.co.uk/free-swimming-in-sandwell>

OFSTED

The full report is now available online at www.ofsted.gov.uk and on the school website

<http://www.shenstonelodge.ik.org/>

The school has been graded GOOD in all areas and has met all the required standards within the residential provision. This is the toughest inspection framework yet and the school is extremely pleased that the recent hard work by staff and pupils at all levels has been recognised by the inspection team.

WELL DONE ALL !





FOOTBALL FOCUS

Brades Lodge have played at home against Birmingham school Hunters Hill, who proved to be tough opposition. The lads performed well creating the better chances for goals "We played with great teamwork" said Connor, although they lost 2-1.

Shenstone Lodge took victory, against mainstream school Greysbrooke in a fast flowing open game. Some excellent individual performances secured the 3-1 win.

Finally, a MASSIVE well done to Dakari and Baileigh at Shenstone Lodge who have secured 6 week academy placements for Birmingham City FC and WBA youth teams respectively. We look forward to them performing well and having the opportunity to begin a career in football.



Class 2 'green fingers' lead to success

Shenstone Lodge pupils have now been awarded Level 2 of the RHS award scheme. They received a certificate and a book about how to grow vegetables.

This term they are going to spend a morning 'growing with grown ups' and have invited the support staff from school to come and help them in the garden. This will serve as part of their level 3 work.

TOP TIP - "when planting onion and garlic we use the saying : onions sit on the bed; garlic is tucked up in bed. This helps us remember how to plant them."

RESIDENTIAL HIGHLIGHTS

The children have had a fun packed half term with lots of things going on in the evenings. Alongside the regular football coaching and sports sessions delivered by WBA and Sports Plus using the Governments Primary School PE Fund, the children have been involved in cookery, arts and crafts and a wide range of visits to local parks and centres. In addition a recent 'Pamper Night for Boys' was a great success.

All the activities are focussed on supporting the children develop their social skills, build self esteem and to improve their resilience to change.

If you feel that your primary age child may benefit from the residential experience please contact Mrs Lancaster or Mrs Hollis at Shenstone Lodge School on 01543 480369.

Well Done...



To Robert and Bradley at The Brades who have the highest aggregate scores for positive report slips this term.

To Joshua and Jordan at Shenstone Lodge for achieving the highest number of positive report slips this half term.

To Demarni, Ethan, Jaden, Lewis and Chanel who have 100% attendance from September



EBAY BIKE BUSINESS LAUNCH

Brades Lodge students are beginning to put their knowledge and understanding of pedal power to good use by renovating and refurbishing old bikes. With the support of staff, children wrote to the local police requesting that any unclaimed lost or stolen bikes be donated to the school to help raise money for events and activities. As a result several bikes in need of some work were provided. As the bikes are 'made good' they will go onto a local auction website and sold. Over time this will become a self sustaining small business which offers students a number of strong learning trails.

Dillan said " I love bikes ! This is a great opportunity to learn more about them and to earn some money for the school ."



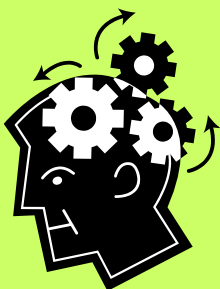
If you wish to support this programme we are looking for old bikes in any condition to add to the stock. Please contact Simon Hobbs at the school on 0121 552 3125 to arrange collection or delivery. As bikes become available for sale we will notify parents and carers through the newsletter and bulletins.

AOB

Thanks To Governor !

David Fereday who has been the Chair of Governors for the last 6 years has sadly decided to move on to spend more time on other projects . I am sure you will join the staff and pupils in thanking him for his support and efforts over the years and wish him well in the future.

Quiz Corner



1. In 1 minute... Count backwards from 340 in 17s ?
2. In 1 minute... Name 20 fruits ?
3. In 1 minute... Say the alphabet backwards ?
4. In 1 minute... Think of 15 girls names beginning with D ?
5. In 1 minute... Can you name the 20 Premier League football clubs?
6. In 1 minute... Finish the limerick " There was a small dog called Sam"

Diary Dates...

Half Term 17th -21st Feb

Pupils Return 24.2.14

Term Ends 1.30pm 11.4.14

Pupils Return 28.4.14

May Bank Holiday 5.5.14

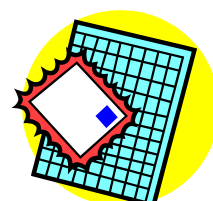
Half Term 26th-30th May

Pupils Return 2.6.14

Term Ends 1.30pm 18.7.14

Questionnaires

A big **thankyou** to those who were able to complete the questionnaire attached to the last newsletter. Again responses were positive overall. The information you receive from school about your child was felt to be better, as was your feeling that children were safe. The results indicate that you would like to know more about how computers support the students learning and to know more about how the school is preparing students for employment. This will be addressed between now and Summer.



Information about National Special Education Needs and Disability Reforms

September 2014 is the date for implementation of a range of new developments that will affect services in education, health, adults' and children's social care across the Country. The changes are much more than just revised procedures.

There will be a requirement on Local Authorities to publish a 'local offer' of services they expect to be available for children and young people with SEN from birth to the age of 25. This is not just about specialist services but also concerns promoting the capacity of all universal services to meet the needs of children, young people and their families.

Education, Health & Care Plans (EHCP)

An EHC Plan will replace the current Statements of SEN and Learning Difficulty Assessments.

This will be a more integrated assessment process and should ensure that parents do not have to 'tell their story' over and over again. The EHC plan will be a legal document describing a young person's needs, the provision to meet those needs and the suitable educational placement. The plan must be person centred, focusing on the needs and aspirations of the child. EHC Plans will continue into further education and training, and for some young people up to the age of 25.

The school will keep you informed of how and when these changes will impact on you and your child.